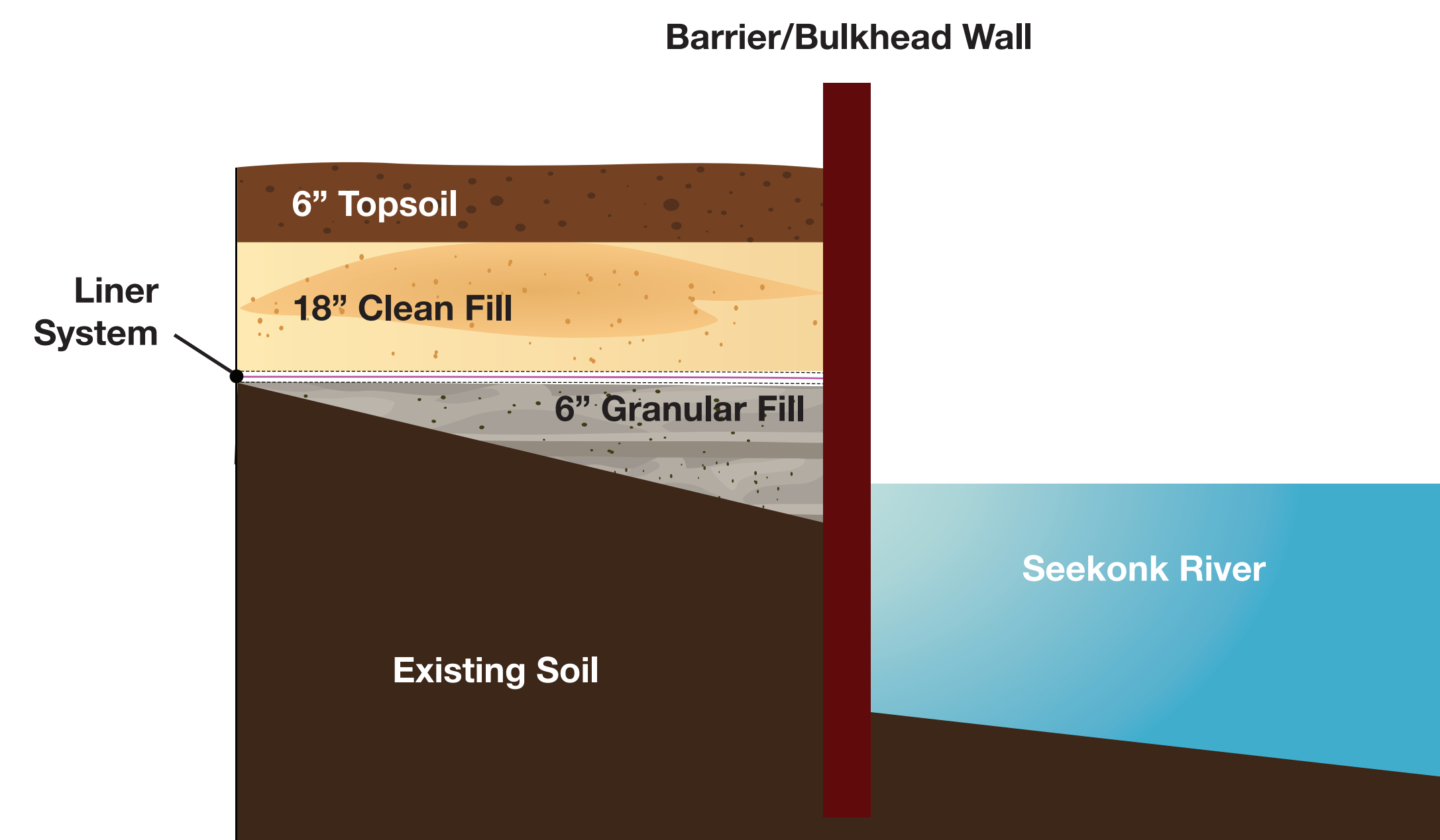


CONTAINMENT WALL DETAILS

A containment wall, installed along the Seekonk River, will prevent the migration of impacted groundwater and non-aqueous phase liquids (NAPLs).

BARRIER/BULKHEAD WALL

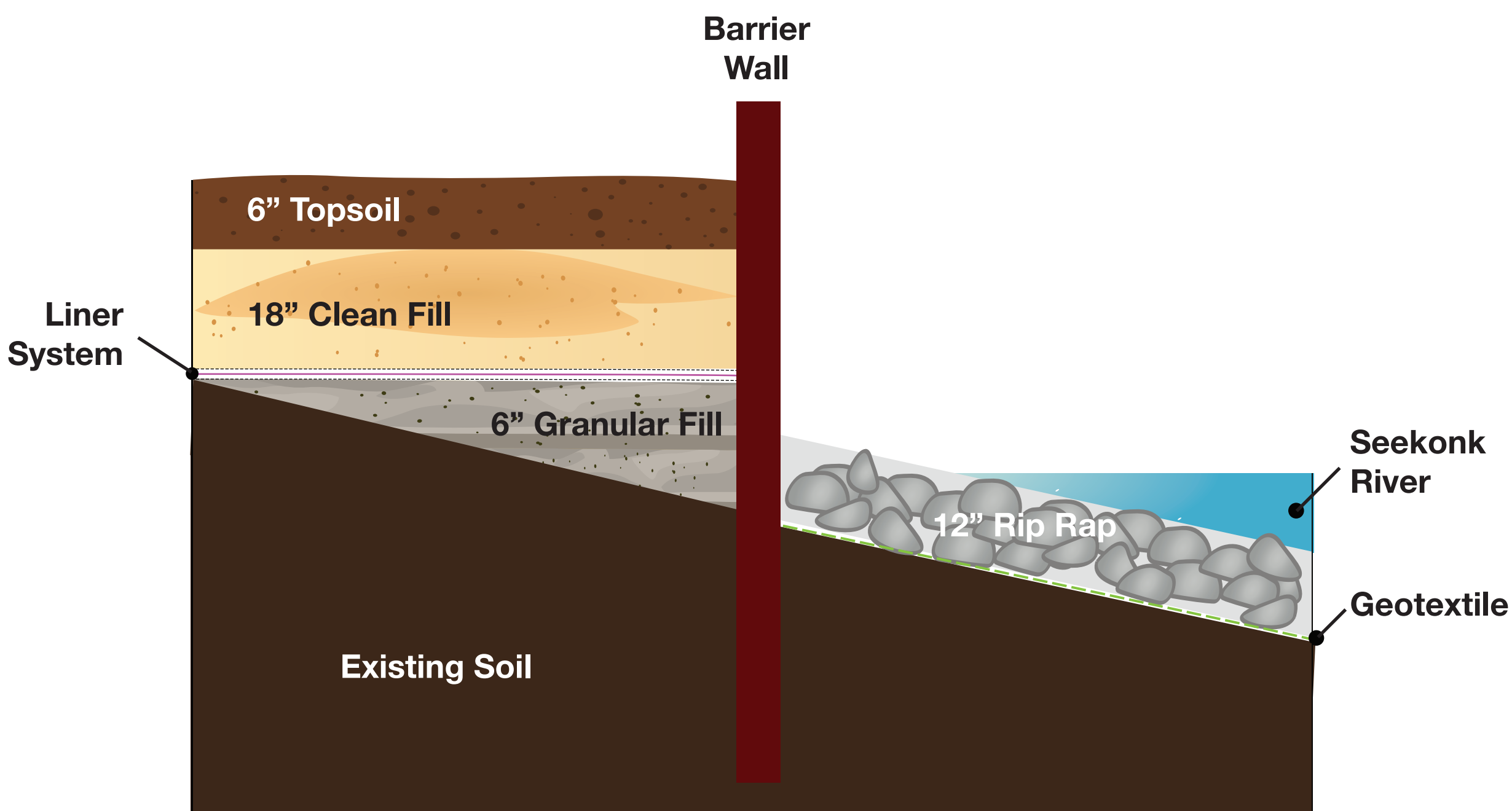


WHAT TO EXPECT
Examples from other projects

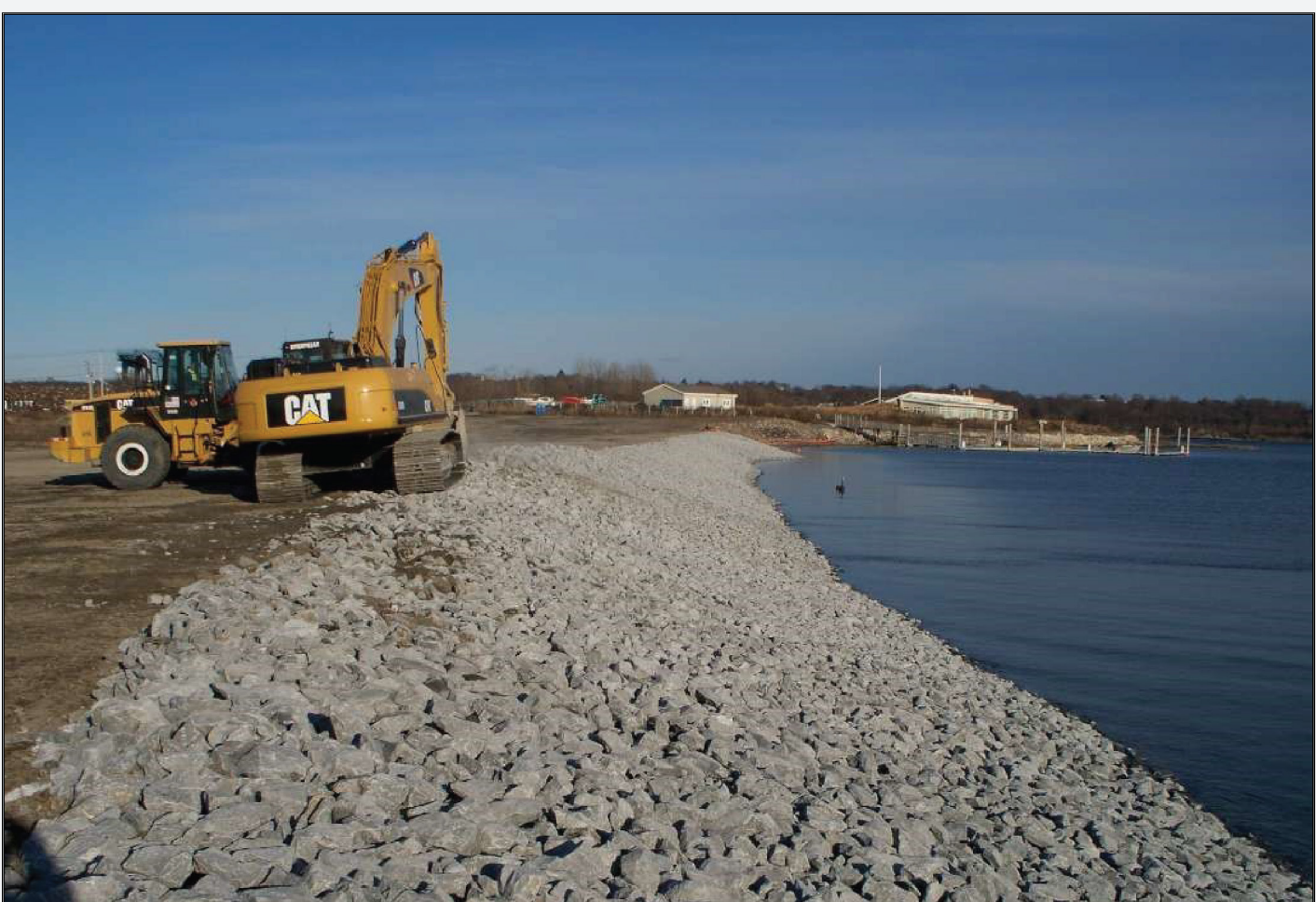


Construction of Barrier Wall - Sheet Pile Installation

BARRIER WALL WITH RIP RAP RETAINING SLOPE



WHAT TO EXPECT
Example from another project



Shoreline Improvement with Rip Rap