
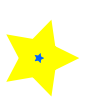
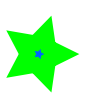




# AIR MONITORING PROGRAM

Throughout construction of the remedy, National Grid will deploy a robust, multi-tier air monitoring program to protect both onsite workers and community. Air monitoring data can be accessed at [www.tidewater.com](http://www.tidewater.com).



## LEGEND

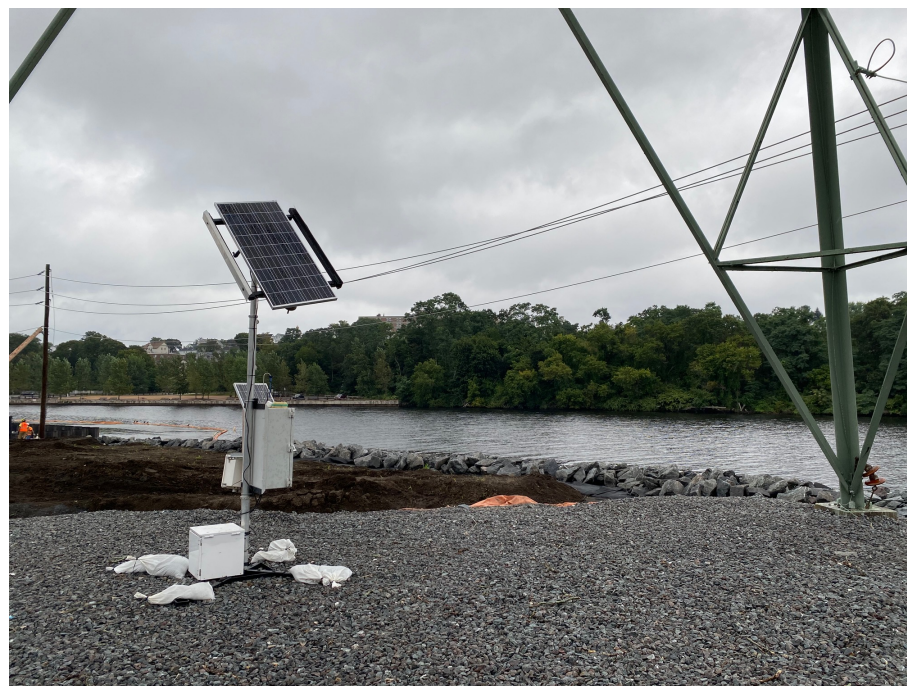
-  Current Air Monitoring Station Location - Solar Light Units (Organic Vapors and Fugitive Dust)
-  Current Full Air Monitoring Station Location - Classic Units (Organic Vapors, Fugitive Dust and Benzene)
-  Proposed Phase 4/5 Air Monitoring Station Location - Solar Light Units (Organic Vapors and Fugitive Dust)
-  Proposed Phase 4/5 Full Air Monitoring Station Location - Classic Units (Organic Vapors, Fugitive Dust and Benzene)
-  Bulletin Board Location

## TIER 1 - REAL-TIME MONITORING

SITE PERIMETER



Classic Units



Solar Lite Units

## TIER 2 - AIR SAMPLE COLLECTION FOR LABORATORY TESTING

TIME-INTEGRATED SAMPLING



Summa Cannister