

REMEDIAL LAYOUT PLAN

The remedy for the Site consists of targeted removal of certain impacts, installation of a subsurface barrier wall designed to protect the Seekonk River and the use of engineered caps to isolate impacts. This remedy was selected based on its ability to address Site impacts while minimizing community disturbance during implementation.

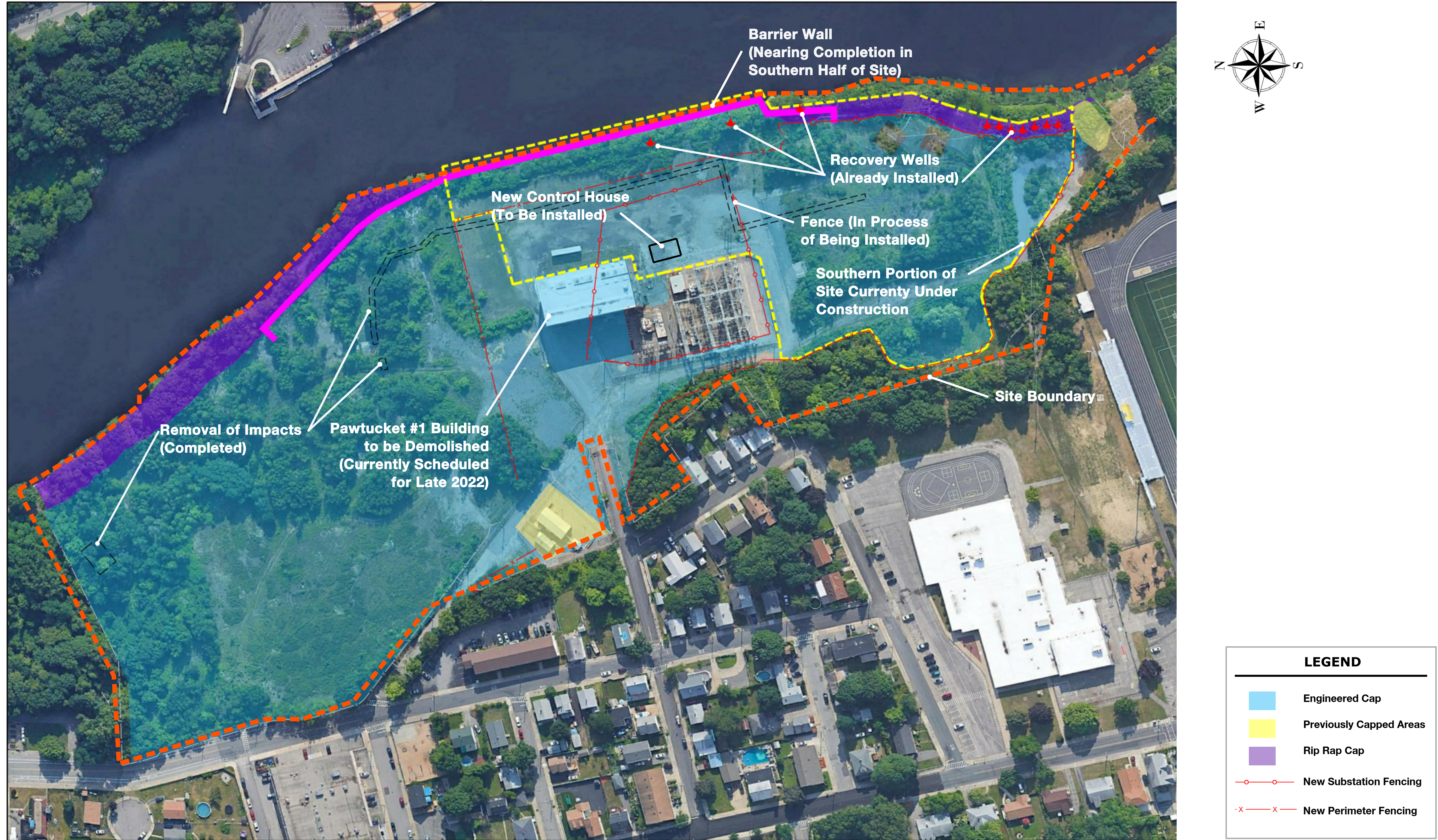


Image courtesy of Google Professional