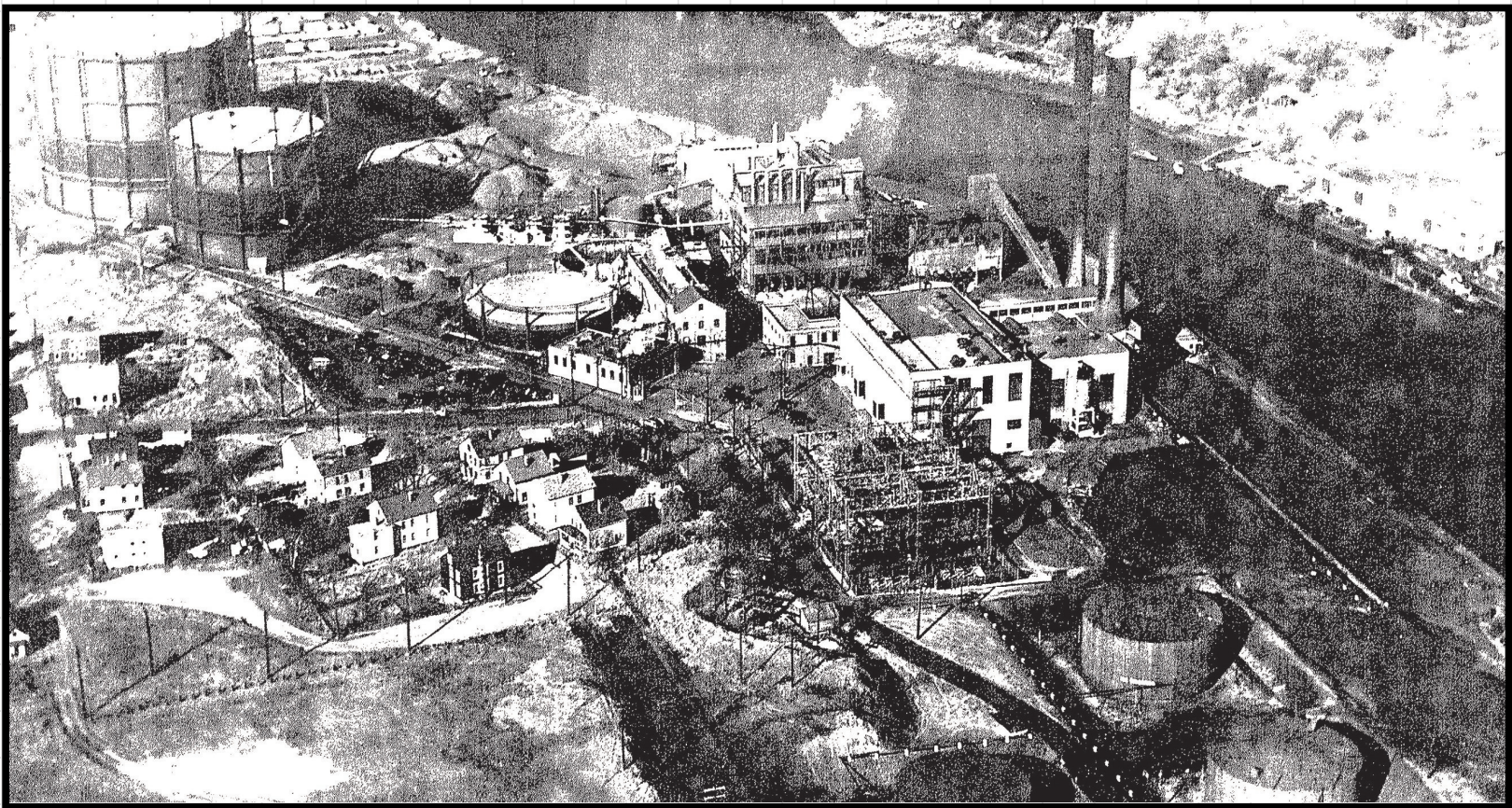
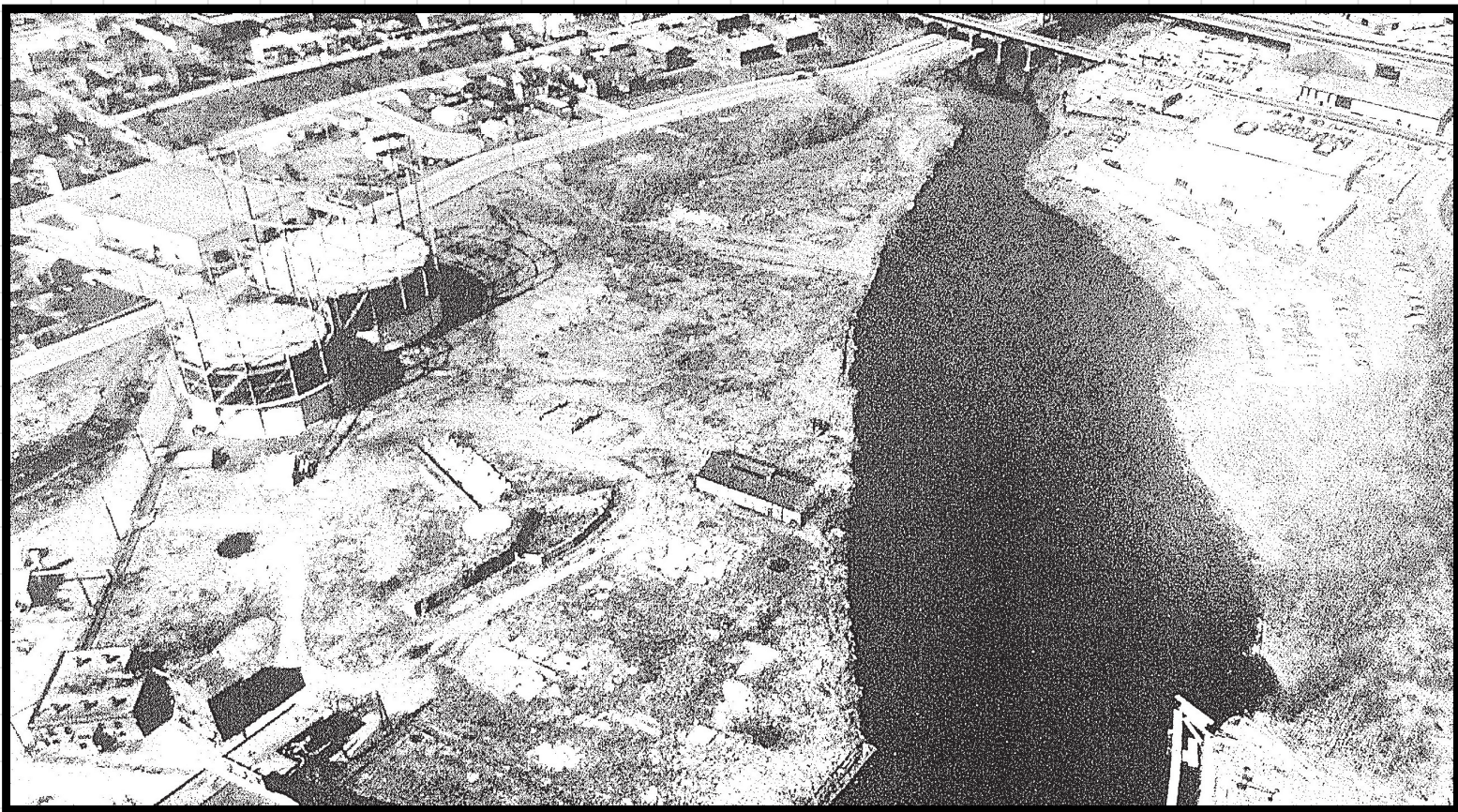


SITE HISTORY

The Tidewater Site has a long History of industrial use dating back to at least 1881. Site operations, including the historic Manufactured Gas Plant (MGP), provided essential electric and gas service to the community for over 130 years. Large areas of the site are currently vacant. Current operations include a natural gas regulation facility, electrical transmission facilities and an electrical switch and substation facility.



- 1881

The Pawtucket Gas Company constructs the Tidewater Manufactured Gas Plant (MGP) to produce manufactured gas from coal and oil using industrial processes.
- 1908

Blackstone Valley Gas and Electric Company (BVG&E) purchases the Pawtucket Gas Company.
- 1938

The Great Hurricane of 1938 causes significant damage to the MGP and power plant.
- 1961

Valley Gas Company (VGC) acquires the MGP from BVG&E.
- 1962

The transmission towers are first evident in historical records for the power plant.
- 1975

The power plant is officially decommissioned.
- 1995

Rhode Island Department of Environmental Management (RIDEM) issues a Letter of Responsibility to BVEC and VGC.
- 2006

National Grid acquires the Rhode Island gas utility and the gas portion of the Tidewater Site.
- 2017

Performance of Limited Design Investigation
- 2018

Remedial Action Work Plan Submitted to RIDEM
- AUG. 2019

Permit Application Package Submitted to Regulators
- MARCH 2020

RIDEM Issued Order of Approval
- SEPT. 2020

Community Outreach Event Prior to Start of Environmental Work
- FALL 2021

Environmental Work in Southern Half of Site Anticipated to be Completed

Period of MGP Operations

National Grid Ownership of the Former Gas Plant Area and the North Fill Area

18801900192019401960198020002020

Period of Active Power Plant Operations

National Grid Ownership of the Former Power Plant Area and the South Fill Area

- 1890

Pawtucket Gas Company constructs the power plant.
- 1923

Power plant changes its primary fuel from coal to oil.
- 1954

Majority of MGP operations ceases, though oil gas is produced on an as-needed basis to supplement available natural gas supply until approximately 1968.
- 1968

The Blackstone Valley Electric Company (BVEC) acquires the power plant from BVG&E. The MGP is officially decommissioned. The City of Pawtucket acquires portions of the southernmost section.
- 1986

Site investigations begin.
- 2000

National Grid acquires the Rhode Island electric utility and the electric portion of the Tidewater Site.
- 2009-2016

Facility upgrades include:
 - Natural Gas Regulating Station upgrades
 - Gasholders Nos. 7 and 8 decommissioned and demolished
 - Pawtucket No.1 Substation and Switching
 - Station modifications
 - Former gas buildings demolished
 - Repair of the south washout area
- MAY 2019

RAWP Addendum submitted to RIDEM
- DEC. 2019

Army Corp of Engineers Approval
- MARCH 2020

Coastal Resources Management Council Approval
- NOV. 2020

Environmental Work Initiated (Southern Half of Site)
- FALL 2021

Environmental Work Anticipated to be Initiated in Northern Half of Site

