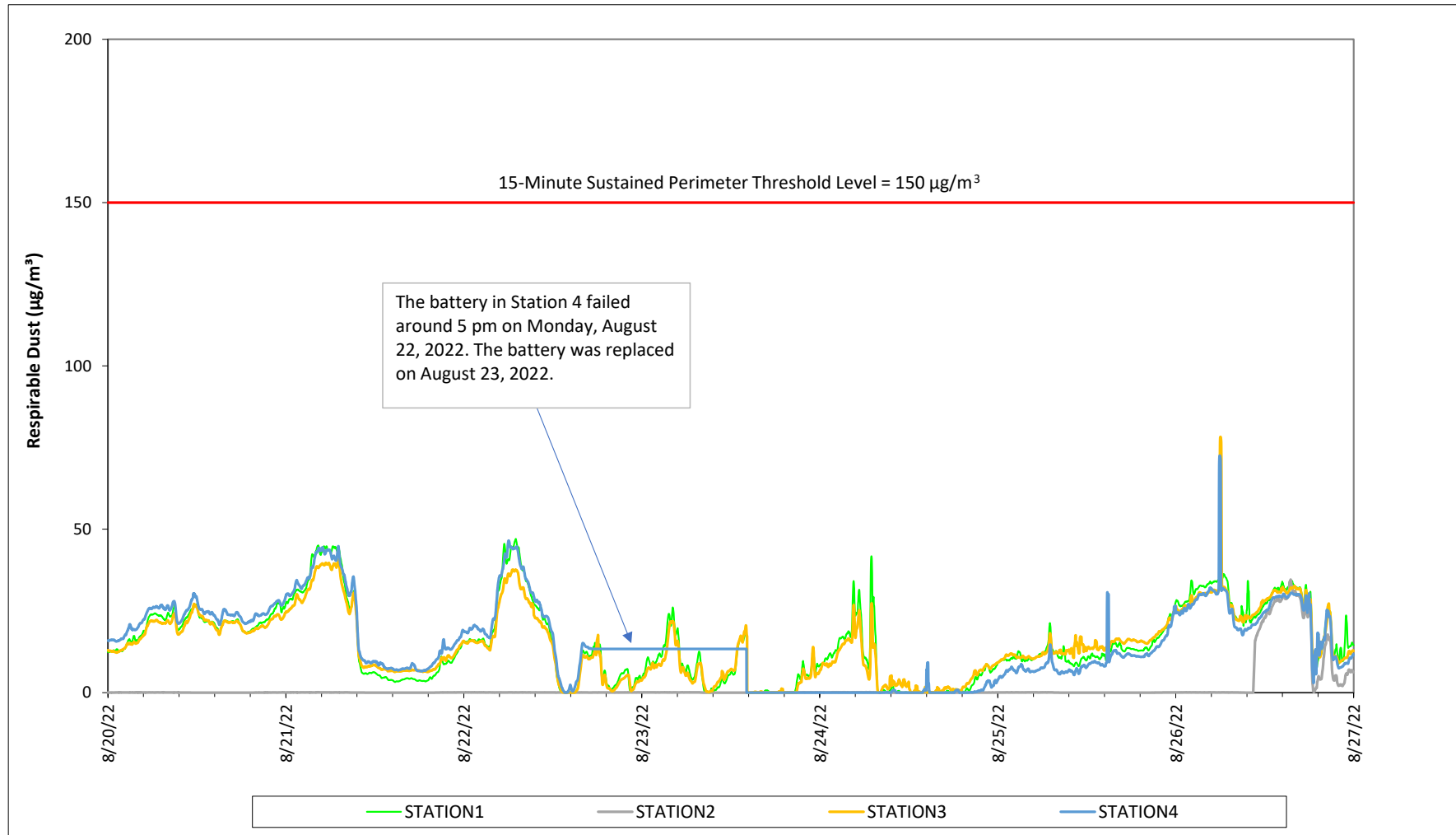
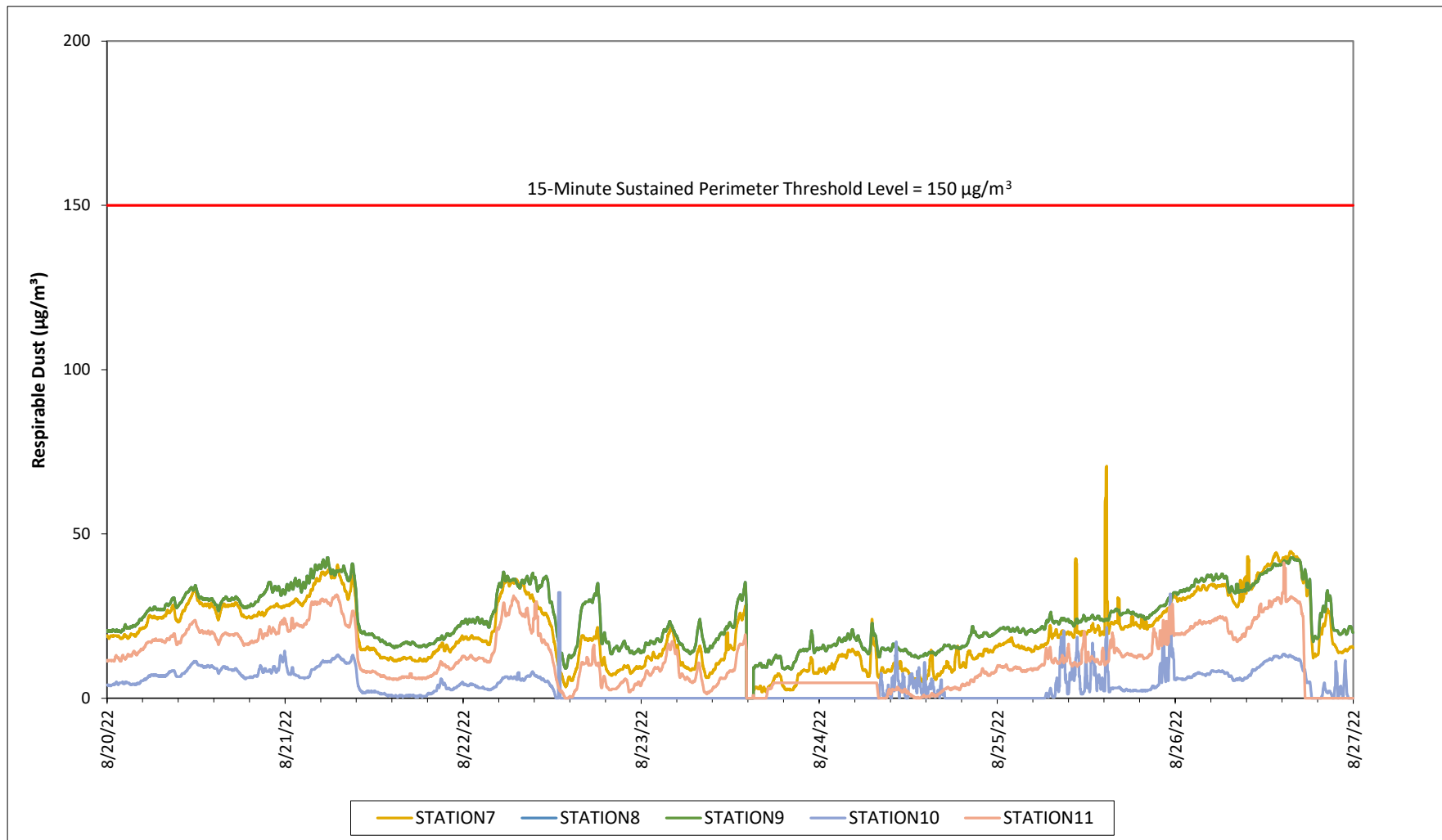


Prepared by Rhode Island Energy for the Businesses and Residents Located Near the Former  
Tidewater Facility  
Air Quality Monitoring - Respirable Dust

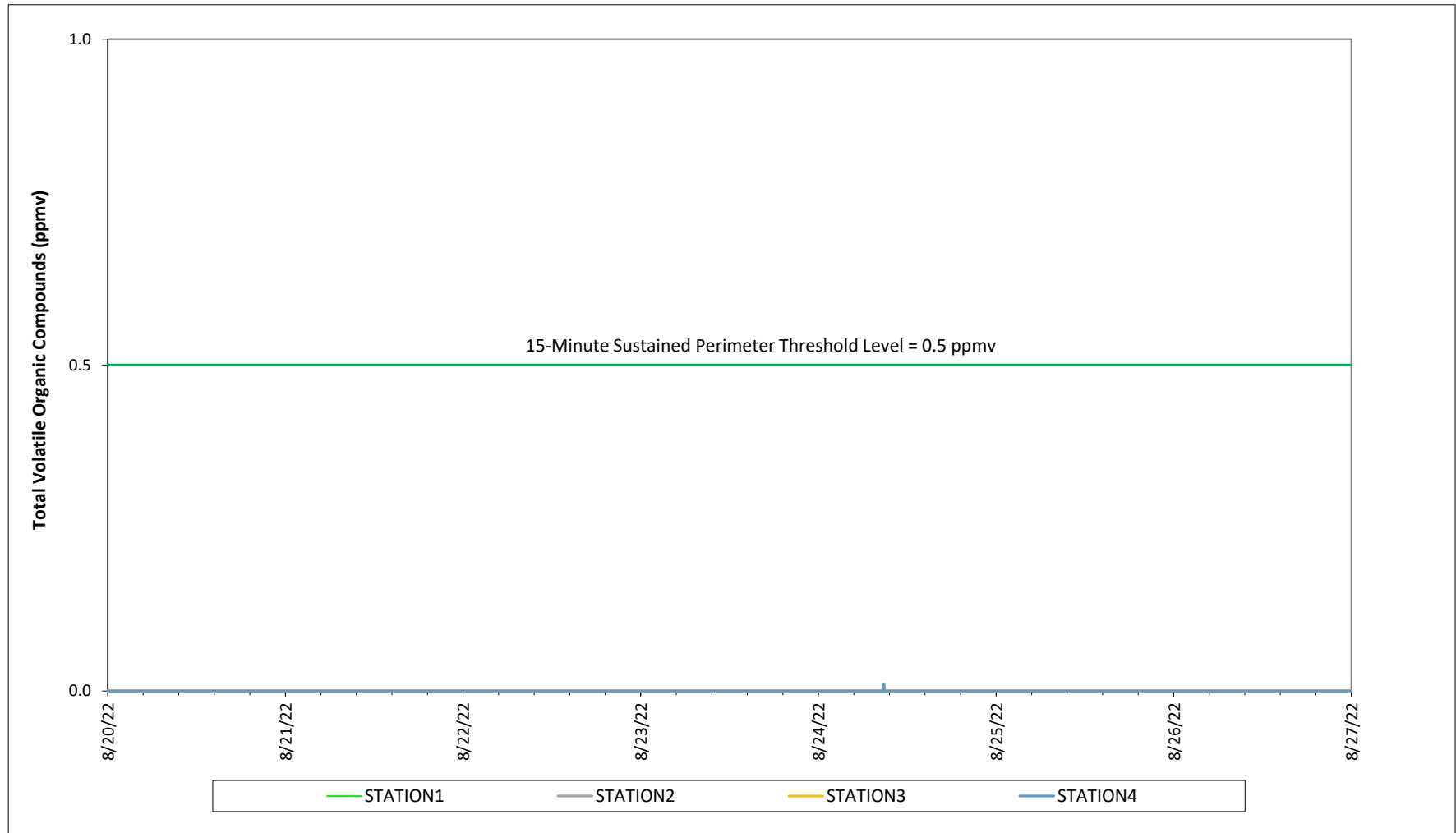


Prepared by Rhode Island Energy for the Businesses and Residents Located Near the Former  
Tidewater Facility  
Air Quality Monitoring - Respirable Dust



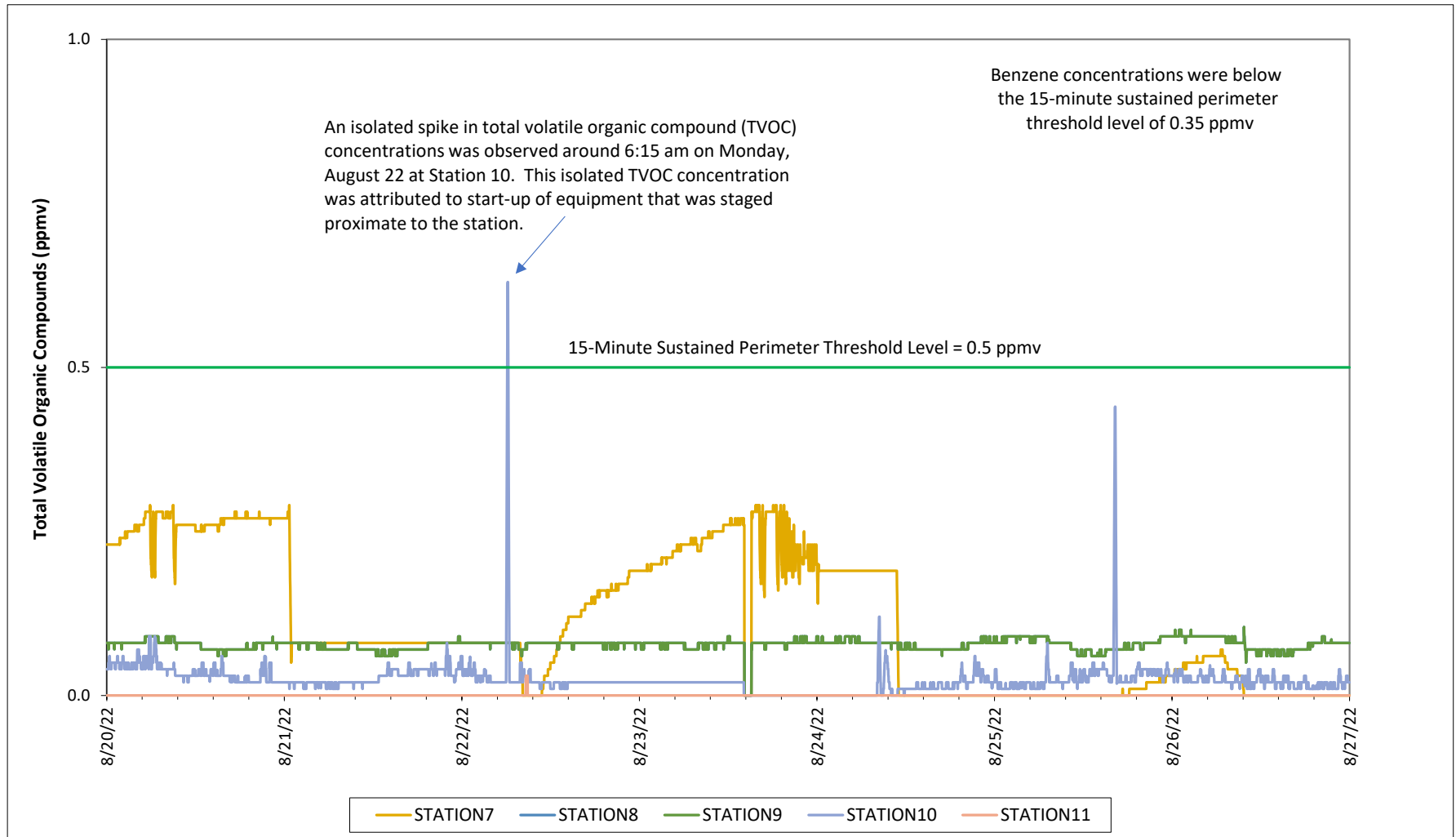
Prepared by Rhode Island Energy for the Businesses and Residents Located Near the Former  
Tidewater Facility

Air Quality Monitoring - Total Volatile Organic Compounds



Prepared by Rhode Island Energy for the Businesses and Residents Located Near the Former  
Tidewater Facility

Air Quality Monitoring - Total Volatile Organic Compounds





# Air Monitoring Station Locations - Former Tidewater Facility

